

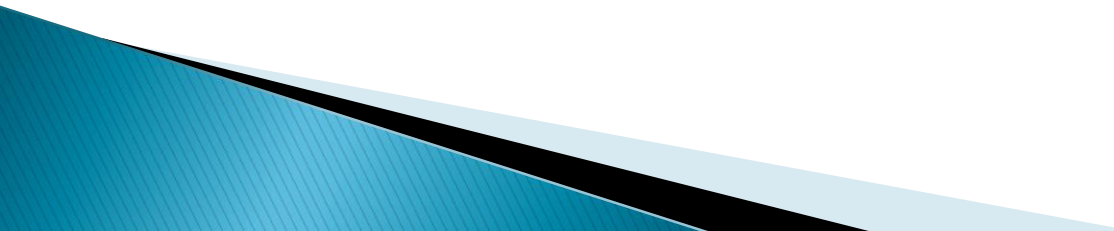
Promise Early Education Center Family Services



Family Engagement


Standard: 1302.50

Promise Early Education Center Staff:

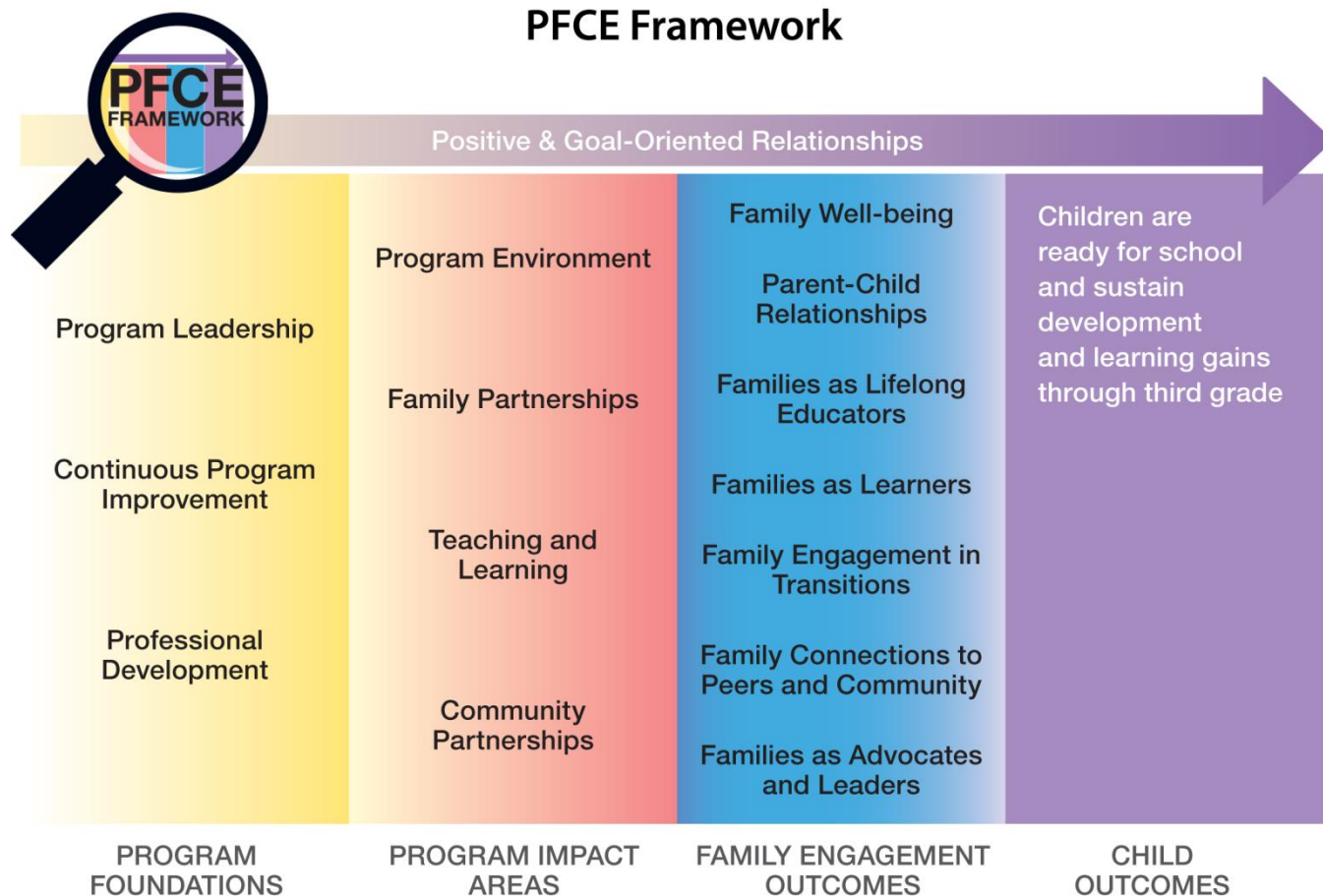
- ▶ Recognize that parent's are their child's primary teacher and nurturers.
 - ▶ Work to ensure that parents are engaged in their child's learning and development and support positive parent-child relationships.
 - ▶ Develop relationships with parents that are trusting, respectful and foster ongoing communication
- 

Family Engagement Cont...

Promise Early Education Staff:

- ▶ Have an open door policy in all of our classrooms where families are welcome to attend and participate in aspects of the day
 - Parents who would like volunteer on a more consistent basis need to connect with our Training Coordinator.
 - ▶ Collaborate with families to identify needs, interests, strengths and to set goals and connect families to resources within our community through the Family Partnership Agreement process.
 - ▶ Ensure that the work we do with families is completed in their native language through the use of language facilitators and contracted interpreters.
- 

Parent, Family and Community Engagement Framework



Program Foundations

- ▶ The director, the governing board, policy council, parent committees and management teams determine the way that Head Start and Early Head Start programs engage parents, families, and the community.
- ▶ Leadership is committed to continuously improving systems and activities to engage and support parents and families.

Program Leadership

Continuous Program
Improvement

Program Foundations

- ▶ PFCE training is important to all staff, but their professional development will focus uniquely around their roles in the program.

Professional
Development

Program Impact Areas

- ▶ Families feel welcomed, valued, and respected by program staff.
- ▶ Families work with staff to identify and achieve their goals and aspirations.

Program Environments

Family Partnerships

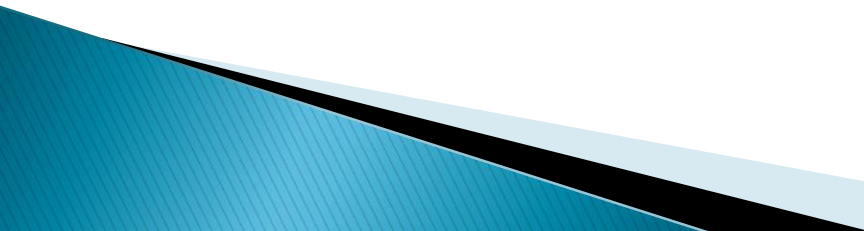
Program Impact Areas

- ▶ Families are engaged as equal partners in their children's learning and development.
- ▶ Communities support families' interests and needs and encourage parent and family engagement in children's learning.

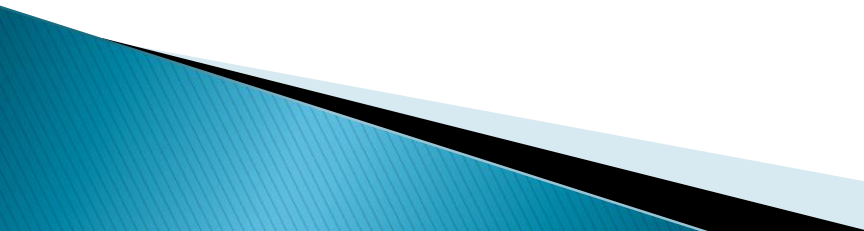
Teaching & Learning

Community Partnerships

Family Engagement Outcomes

- ▶ **Family Well-Being**
 - Parents and families are safe, healthy, and have increased financial security.
 - ▶ **Positive Parent-Child Relationships**
 - Beginning with transitions to parenthood, parents and families develop warm relationships that nurture their child's learning and development.
 - ▶ **Families as Lifelong Educators**
 - Parents and families observe, guide, promote, and participate in the everyday learning of their children at home, school, and in their communities.
 - ▶ **Families as Learners**
 - Parents and families advance their own learning interests through education, training and other experiences that support their parenting, careers, and life goals.
- 

Family Engagement Outcomes, Cont...

- ▶ Family Engagement in Transitions
 - Parents and families support and advocate for their child's learning and development as they transition to new learning environments, including EHS to HS, EHS/HS to other early learning environments, and HS to kindergarten through elementary school.
 - ▶ Family Connections to Peers & Community
 - Parents and families form connections with peers and mentors in formal or informal social networks that are supportive and/or educational and that enhance social well-being and community life.
 - ▶ Families as Leaders & Advocates
 - Parents and families participate in leadership development, decision-making, program policy development, or in community and state organizing activities to improve children's development and learning experiences.
- 

Parent activities to promote child learning and development

Standard: 1302.51

▶ Open House

- Attendance discussion– Count me in
- Classroom schedule/ center information
- Policy Council Discussion/vote in representative

▶ Math & Science Night

- Parent and child centered activities
- Dinner is provided

▶ Literacy Night

- Parent and child centered activities
- Dinner is provided

▶ Monthly Parent Committee Meetings

- This includes monthly parent training and Policy Council and agency updates

Family Partnership Services

Standard: 1302.52

- ▶ Forming partnerships with families begins at the initial home visit by completing the family assessment:
 - Identify Family Strengths & overall family well-being
 - Family Safety
 - Overall Health
 - Economic Support
 - Support for child's growth and development
- ▶ Staff work closely with families to identify needs and set individual family goals based on those needs and connect families with community resources.

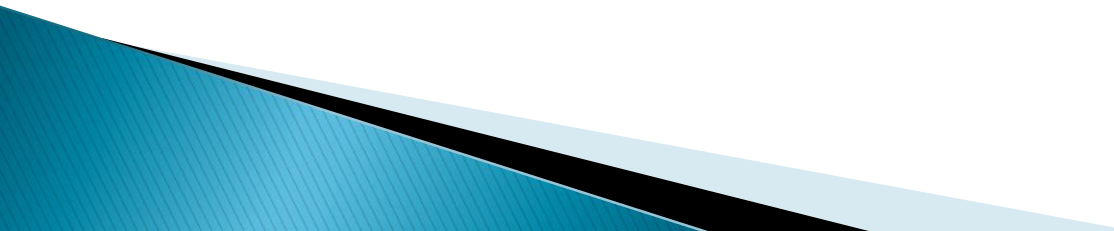
Home Visiting

- ▶ Initial Home Visit
 - To be completed as part of the enrollment process prior to the child attending a class day
- ▶ Parent Teacher Conference
 - Review of child's development & growth
- ▶ Family Partnership Visit
 - Follow up to the Family Assessment completed at the initial home visit, goal setting & goal follow up

Who is responsible for Family Engagement?

- ▶ No matter what role one holds within a Head Start or Early Head Start program, we are all responsible for family engagement!

Working with Families

- ▶ Find out what the families hopes are for their future
 - ▶ Make sure you are talking through the work that you are doing with a family and why
 - ▶ Help families to understand why you are referring them to a program for example and what that means for them and their future
- 

Parent Committee Meetings

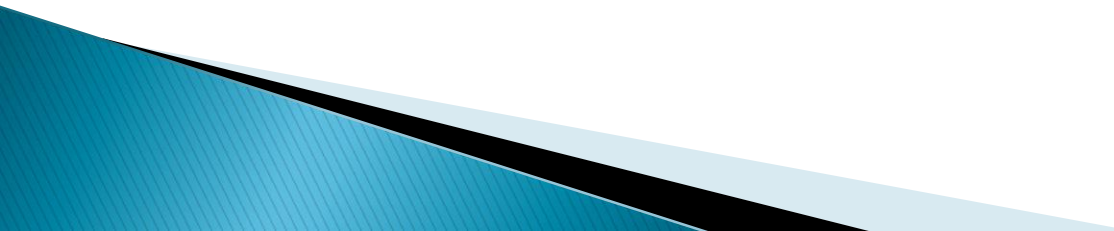
- ▶ Parent Committee Meetings must have 2 components:
 - Policy Council/Agency Updates
 - Parent training
- ▶ Do these have to separate meetings?
 - No! Many have found it more successful to do each piece as 1 meeting

What should a parent committee meeting look like?


▶ **Leave it up to the parents!**

- At your open house, have parents complete a parent education/parent committee survey and base your planning around families needs... for families that do not attend have a “ballot box” where they can complete the survey at a later date.
- How would they like to receive information?
- When is a good time to meet?
 - Know that you are not going to have 100% attendance at all times but having parents know they have input in the planning may generate attendance

Ideas for Parent Committee Meetings

- ▶ **Formal Meeting:** Seated at a round table so to speak where one person facilitates and the others listen and supply information when asked.
 - ▶ **Morning Mingle:** Can be done a couple times a month where one is facilitated by staff to deliver Policy Council information and delivering parent education opportunities via handout or guest speaker. The second mingle could just be parents connecting with each other.
- 

More ideas for Parent Committee Meetings

- ▶ **Parent Café:** 2 or 3 tables for parents to visit each with a different “topic”. For example, one table could be to deliver Policy Council information and the second table could be a place for a guest speaker to deliver the parent education portion of the meeting and the third table can be a place for parents to connect with each other.
 - ▶ **Make-N-Take:** Pair a parent/child activity with your parent committee, items can be obtained from the share center and can be used in connection with curriculum... don't forget about the Share Center!!
- 

What is Policy Council?

- ▶ Policy Council is essentially a parent and community member board of directors that helps in the decision making process for our agency
 - P.C. must consist of parents of currently enrolled children and community partner representatives that are identified by the parents each year. 51% of P.C. must be parents and the community representatives make up the other 49%.
- ▶ Our Policy Council meets once a month from 5–7p, dinner is served, we provide child care and families receive a stipend for each meeting attended

How do I identify a policy council representative?

- ▶ At open house share information on what it means to be a policy council representative:
 - Once a month commitment (dinner & child care provided, stipend for attending)
 - Should be able to attend most if not all parent committee meetings
 - Shares information with policy council on what is happening in the classrooms
 - Shares information with parent committee about what took place at policy council
 - Help the agency in decision making processes
- ▶ See who may be interested, based on interest **a vote must be taken**
 - Ensure that all who are present at the open house or parent committee meeting are aware that they are voting for a policy council rep. and ensure that the identified rep. is aware that he/she has been chosen via vote for that rep. role.

Curious

I find myself late with every crisis
More angry with every injustice
More greedy with every deprivation
More disorganized with every eviction
More negative with every unrelated illness
More unstable with every insecurity

I find myself move civil with every bite
More respectful with every kindness
More hopeful with every chance
More grateful with every opportunity
More ready to learn when I am safe
More motivation when there is hope
More happy when I am valued

I find myself like the 37 million people in poverty
Responding in very human ways to my environment

– Donna Beegle

